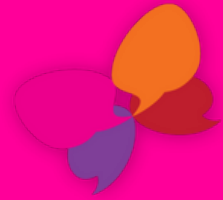


Welcome to Haspalls Road

Supported Living Accommodation
in Swaffham, Norfolk



The **Benjamin** Foundation



The Benjamin Foundation
Registered Charity: 1124936
www.benjaminfoundation.co.uk



Provider ID 1-6909213086
Manager ID CON1-1382270418
Location ID 1-10209709535

Contents

Welcome to Haspalls Road

3

Ways we can support you

4

About Haspalls Road

5-6

All about me – take the quiz!

7-13

Support packages and costs

14

Contact us

15



Welcome to your new home at Haspalls Road

Haspalls Road in Swaffham is a Supported Living service for young people aged 18–30 who are managing learning difficulties. The support is delivered by a local charity called The Benjamin Foundation in partnership with Norfolk County Council and Clarion Housing.

We work together closely to provide a high level of care and support for our residents and we are pleased that you have decided to make Haspalls Road your home, while we support you to live independently.



The **Benjamin** Foundation



Ways we can support you

Our Support Workers will work with you to meet your learning difficulty needs, enabling you to progress in your personal recovery journey and to prepare you for moving on to living independently or with reduced support. Here are some key facts about ways we can support you:

- 1** We will work with you to learn and understand how to maintain your 'licence to occupy' agreement with Haspalls Road and help you understand tenancies when you are ready to move on.
- 2** We will support you to carry out housekeeping, maintaining and keeping within the 'licence to occupy' agreement and being respectful of your housemates.
- 3** We will support you with managing a budget, keeping good finances, shopping and hobby expenditures and will help you to access the community, engage in your interests, seek training and/or work experience.
- 4** We will support you to access medical needs, understand medication requirements. We will also support you to attend appointments and understand medical correspondences.
- 5** We will support you with all letters and correspondences, including applying for benefits.
- 6** We will support you to stay in touch with your family and friends.
- 7** We will support you to take care of all your personal hygiene needs.
- 8** We will support you to reach your targets and goals.

About Haspalls Road and the local area

Haspalls Road is a bungalow with four bedrooms conveniently situated just a ten minute walk to Swaffham town centre, with shops, cafes and other local amenities.

In the bungalow, you will have your own bedroom, which we can support you to make it your own. There is also a shared bathroom, shower room and toilet, and fantastic social spaces including a communal lounge and kitchen, as well as a large garden at the back of the property with a patio area. It's a great space to develop gardening skills or relax on sunny days! It also has a garage for all-important storage.

Swaffham is a small market town in the Breckland area of Norfolk. It has lots packed into it, including local supermarkets, shops, cafes, the Westacre Theatre and a lively Saturday market too.



From the town centre, you can catch the X1 bus to other places including King's Lynn, Peterborough, Dereham, Norwich, Great Yarmouth and Fakenham.

There are also bus stops at Easton College, Norwich City College and the College of West Anglia – perfect for if you're in the process of furthering your learning.

Also in Swaffham you will find a sports centre, community centre, museum and a library all within walking distance of Haspalls Road.



Pictured: Haspalls Road kitchen (left) and the patio (above).

Top photo: Swaffham town centre.

Your bedroom is your own space and we are happy to help you make it your own.

You may have your own furniture or we can provide you with furniture to help you get started. The Benjamin Foundation has a furniture store in King's Lynn where you may find some nice furniture for your room.

We can help you to paint your room, to give you a sense of ownership. You can have your own TV in your room as all bedrooms have an aerial point. We may also be able to consider a small house pet in your room, such as a guinea pig or goldfish. Please speak to a member of staff about this.

You will have your own key to your bedroom and only you will have access to this room; staff will only ever enter in an emergency to help you. Staff will also support you to keep it clean and tidy if you struggle with this and would like their support to do so.



For storage of food items, you will be provided with a cupboard and a drawer that only you can access.

There is a shared fridge and freezer, within which you will have your own shelf/drawer. You may also wish to have a small mini-fridge in your room. This is something you will need to purchase yourself, but staff can support you if required, or we can point you in the direction of a local place to purchase a second hand one (please ask for this information).

Your friends and family are welcome to visit you at Haspalls Road between the hours of 7am and 11.00pm (Sorry – no overnight visitors are allowed).

Haspalls Road is your home so you can come and go as you please – but we like you to let the staff know when you are heading out and when you will return. In the evenings you need to be back by midnight. If you are not confident at going out on your own we can support you to access things in the community and carry out errands and attend appointments in town.

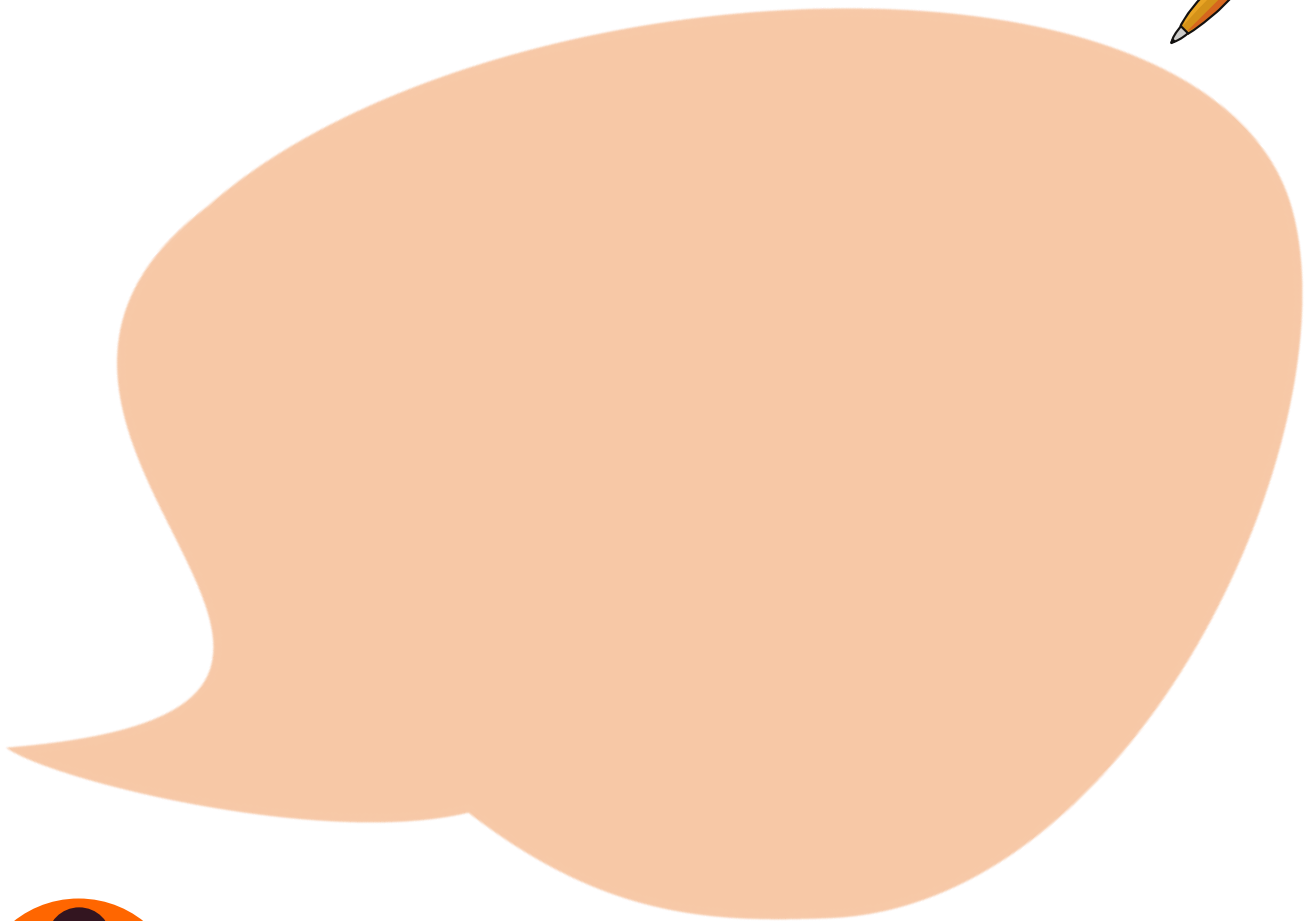
We have a few simple house rules such as everybody contributing to the cleaning. We discuss these with you and listen to your ideas for changes to the rules

All about me

Take our little quiz to tell us about you and what YOU need to help you succeed in your life.

Fill in the speech bubble with all the things that make a good day for you.

Your name:



"Going for walks along the beach."



"Reading a book in my quiet space."

"Having a pyjama day and watching movies with a friend."

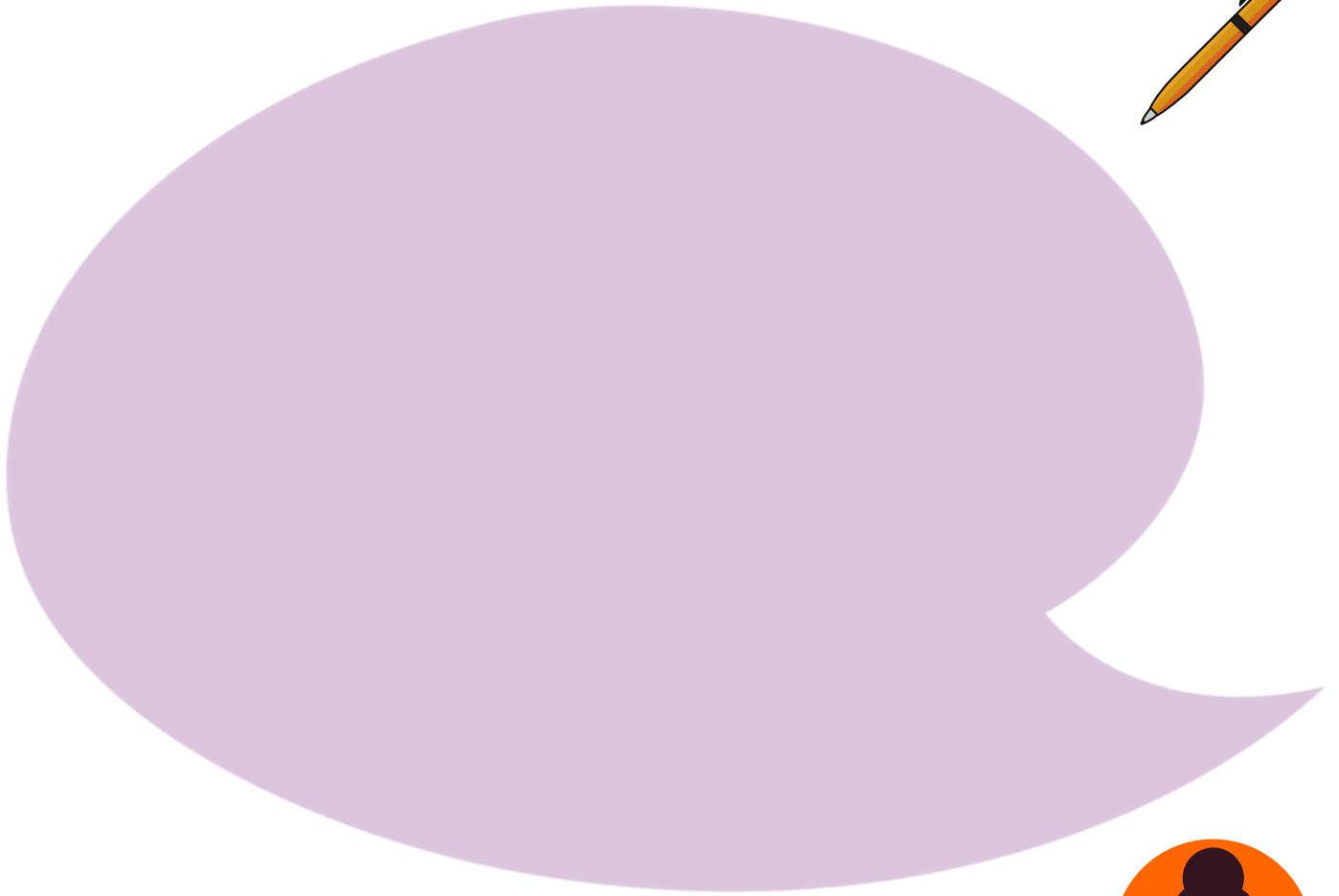


All about me

Take our little quiz to tell us about you and what YOU need to help you succeed in your life.

Fill in the speech bubble with all the things that make a bad day for you.

Your name:



"Being bored and not knowing how to fill my time."



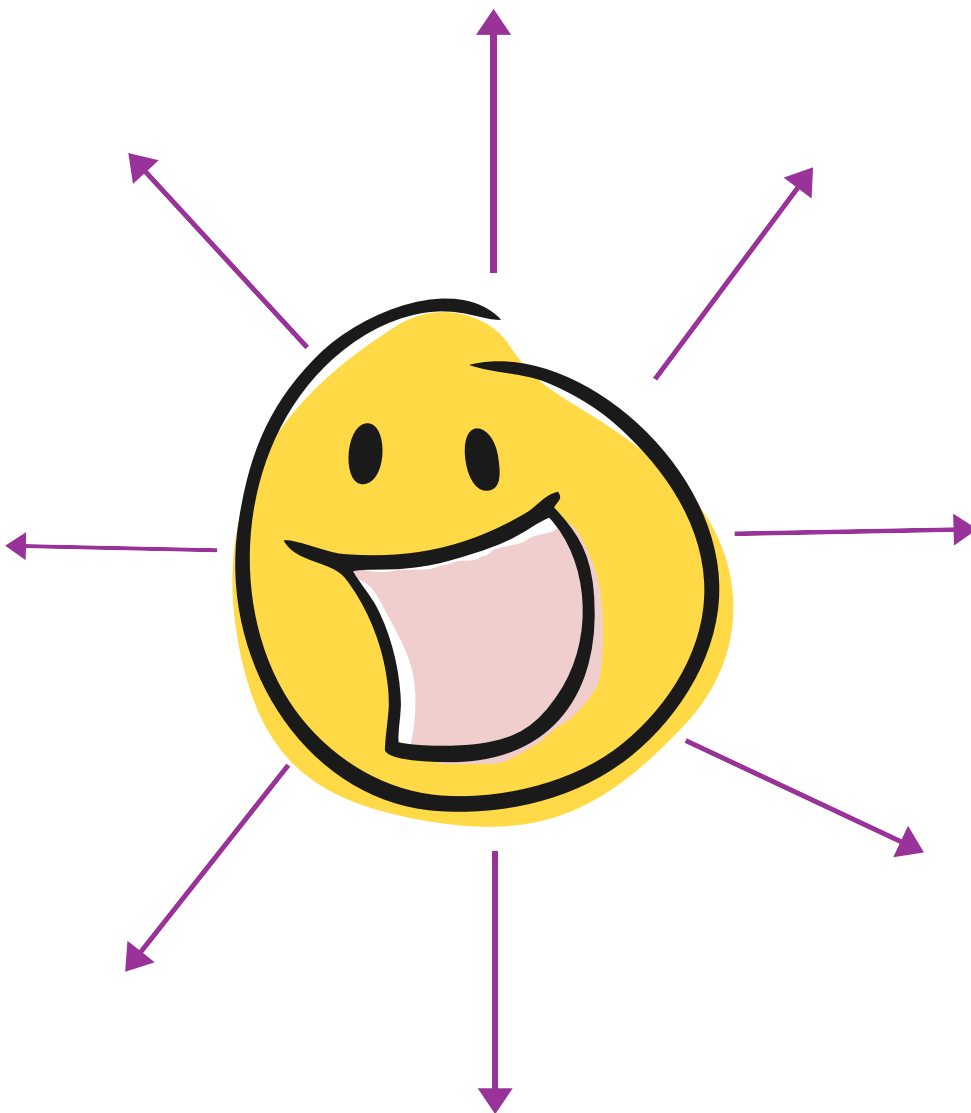
"Struggling to get something done."



"Missing family or friends."



What do you need to have more good days than bad days?



Well Done!

Now let's think about:

- What is important to you?
- What you would like to achieve?
- How you would like to be supported to do the things you want?

What is important to you?



A large rectangular area defined by a dotted black border, intended for writing a response to the question "What is important to you?".

What are your goals?



A large rectangular area defined by a dotted black border, intended for writing the user's goals.

What support would you like and need to achieve your goals?



A large rectangular area defined by a dotted black border, intended for writing a response to the question above.

"I have learned that success is to be measured not so much by the position that one has reached in life as by the obstacles which he has had to overcome while trying to succeed." (Booker T. Washington)

I finally feel...
understood



Support packages

To live at Haspalls Road you will need to pay:

- Rent – we will support you to make a Housing Benefit claim if you are eligible
- Support fees – these will usually be paid by Norfolk County Council

Referrals

To be considered for a space at Haspalls Road you need to be aged 18–30, a Norfolk resident and have your place approved by Norfolk County Council.

"I was able to create a support package that suited me best! I'm quite independent and just needed support with my budgeting, cooking, shopping, medical appointments and learning how to be a good tenant so I can move onto being independent in my own place one day. I don't need much support at night unless I feel poorly.

With the help of my support team and the manager, we designed a support package of 25 hours a week. This is perfect for me right now but I can review later to see how well I am progressing or if I need to ask for more support. Having the right amount of support when I need it most, helps me to keep my independence."

The Benjamin Foundation Supported Living Tenant.



Contact us



The Benjamin Foundation
6 Haspalls Road
Swaffham
Norfolk, PE37 7PB

Registered Manager: Karen Buckle
Housing Management Officer: Karen Webb

E: karen.buckle@benjaminfoundation.co.uk
T: 07825 130138
T: 01760 721634 (Haspalls Road)
T: 07977 161126 (Haspalls Road mobile)

Complaints

In the first instance, complaints are to be directed to Karen Buckle, Haspalls Road Registered Manager.

Should you need to escalate a complaint further, please contact Sharon Matthews, Director of Operations.

E: sharon.matthews@benjaminfoundation.co.uk
T: 07525 801300

The Benjamin Foundation
23-27 St Andrews Street, Norwich, NR2 4TP
T: 01603 615670
E: info@benjaminfoundation.co.uk
W: benjaminfoundation.co.uk

Registered Charity: 1124936 | Company Number: 3825425